

A

a

a



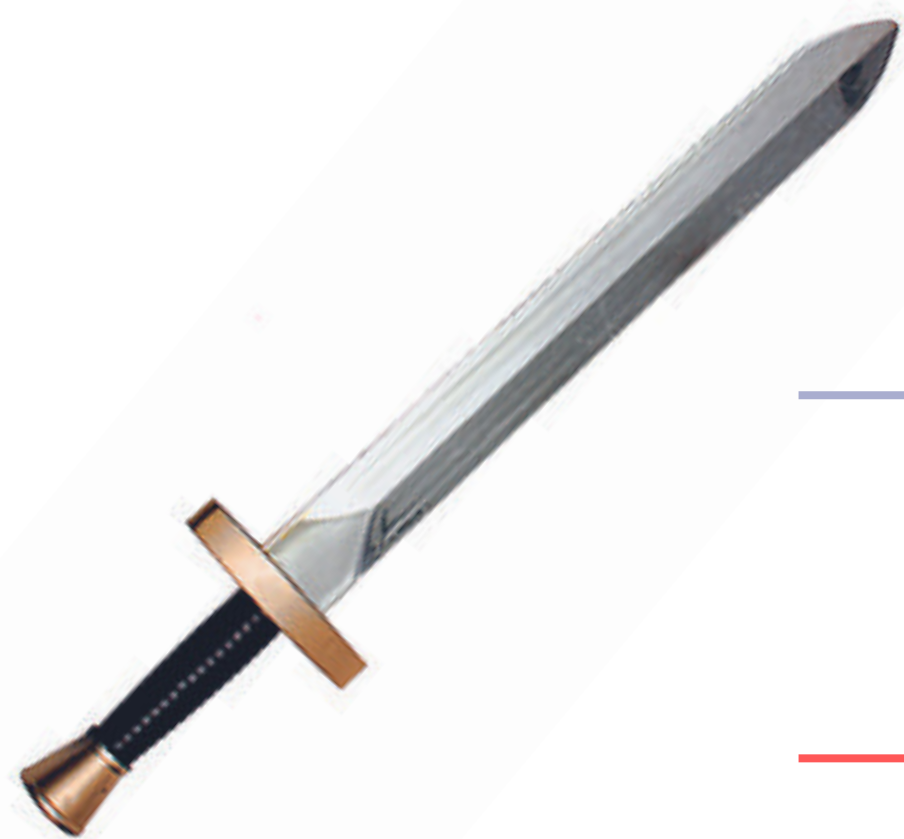
A

a



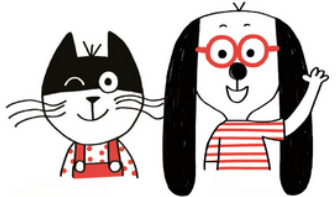
E

e



e





I

i



J

j



O

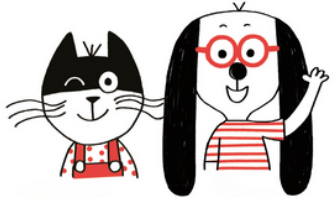
o



Q

q





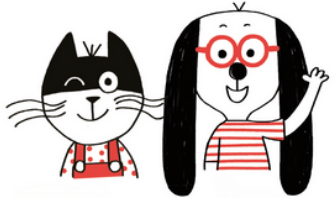
L l



L l

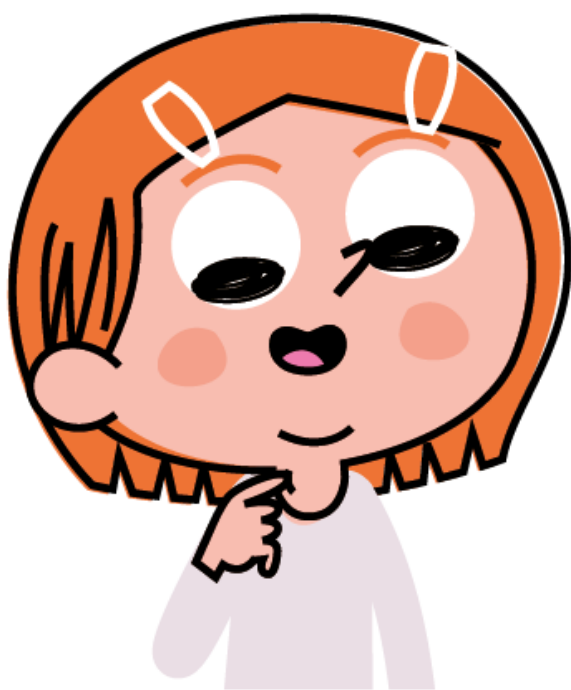
Blank handwriting lines for practice.

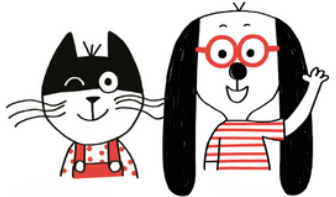




R r

R r





U

u

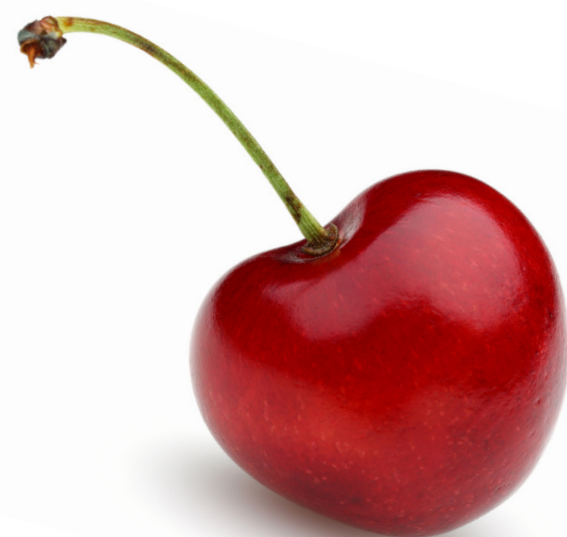


U u

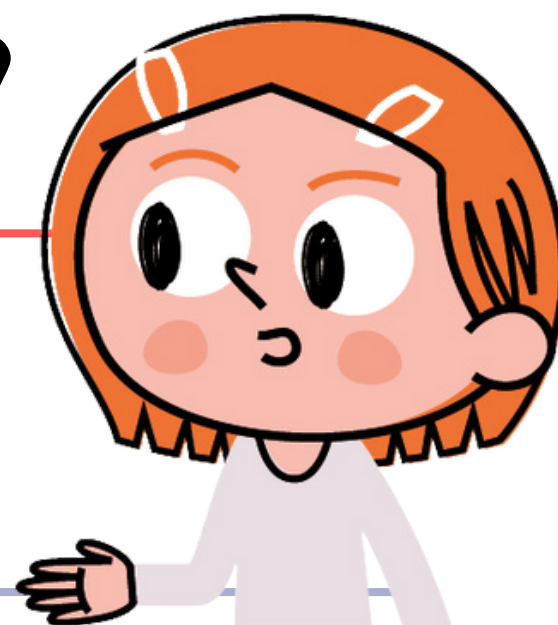


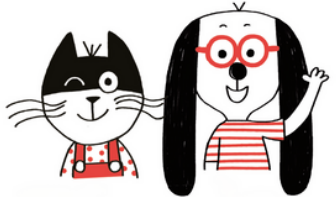
E

e



E e





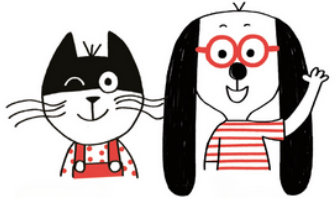
F

f

F

f

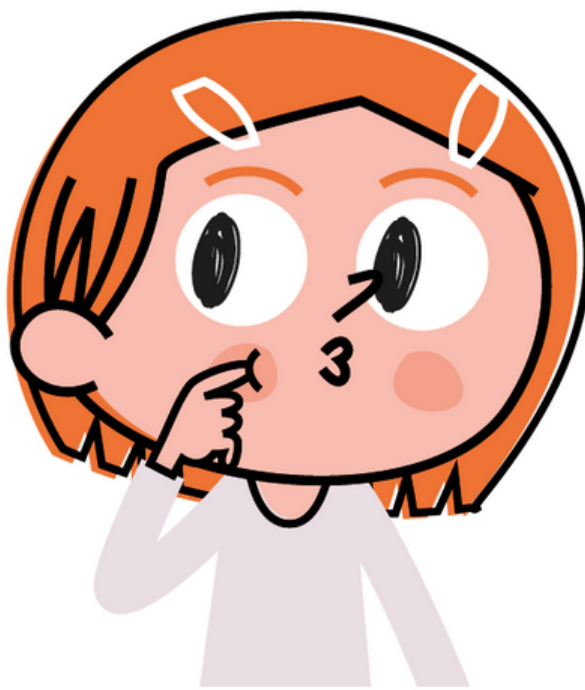


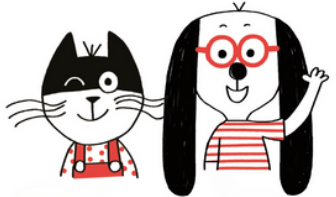


J j



J j





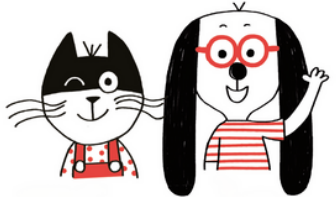
ou



ou

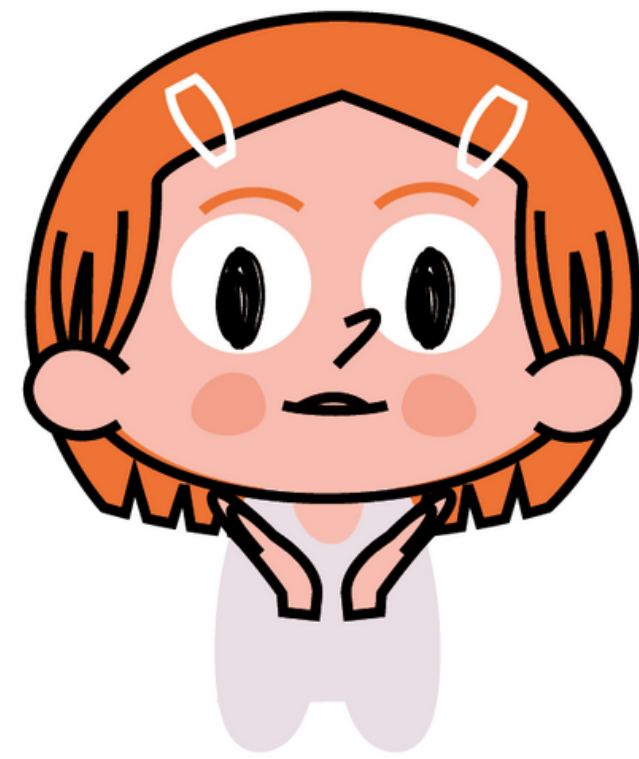






V v

V v





P

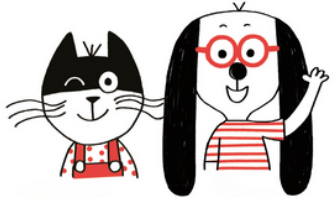
p



P

p

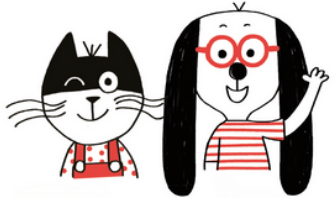




fri

fri



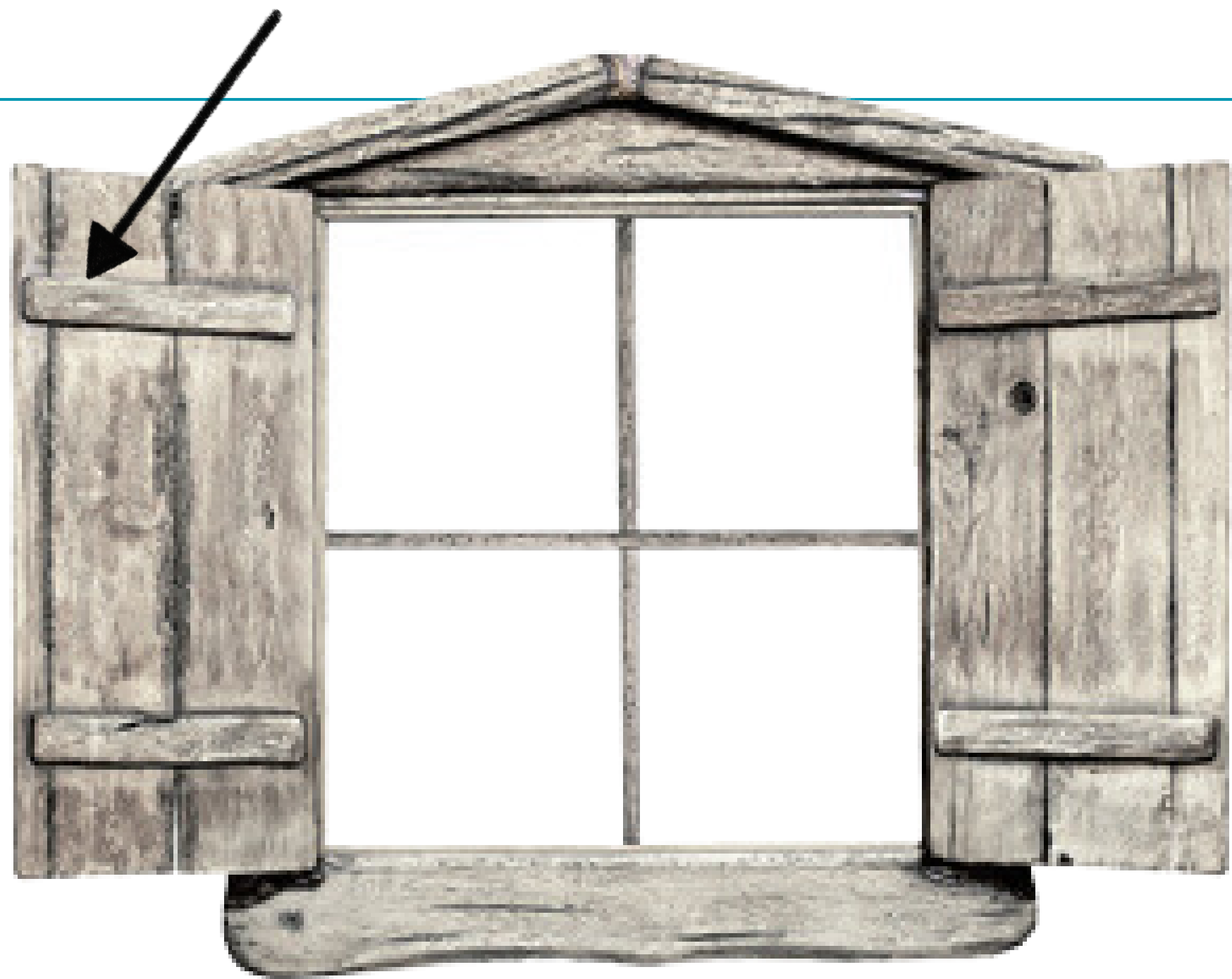


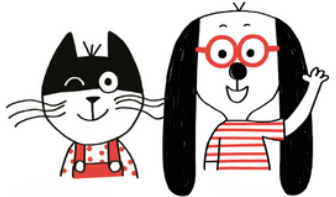
-es

-et

-es

-et

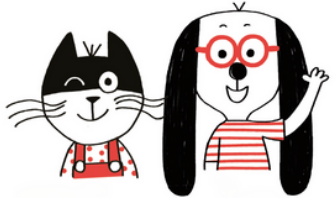




M m

M m



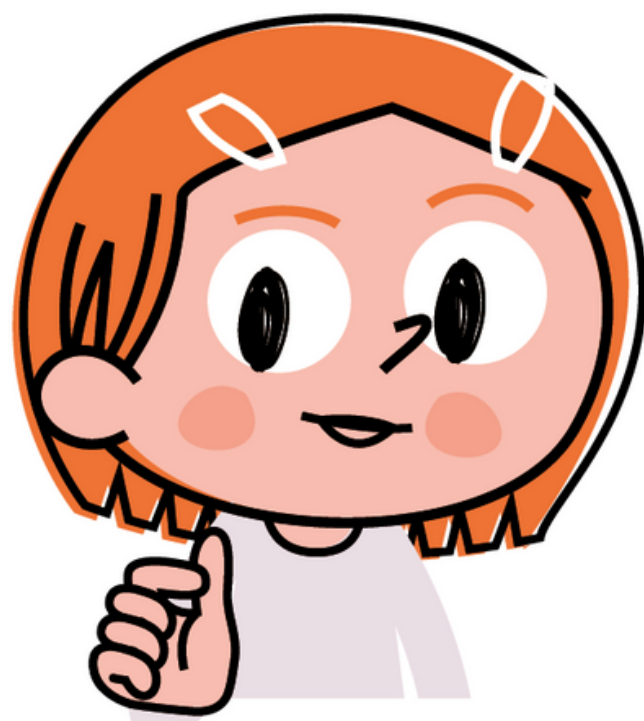


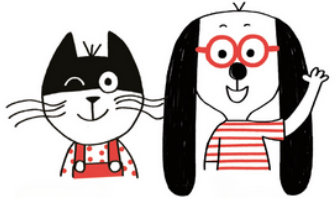
T

t



C t





ch



ch



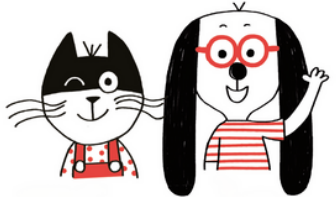


B b

B b



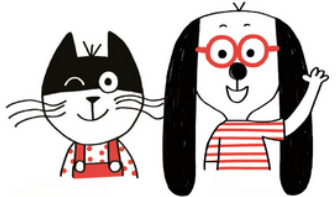




N n

N n





é

ê

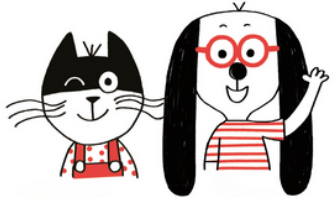
ë

è

ê

ë

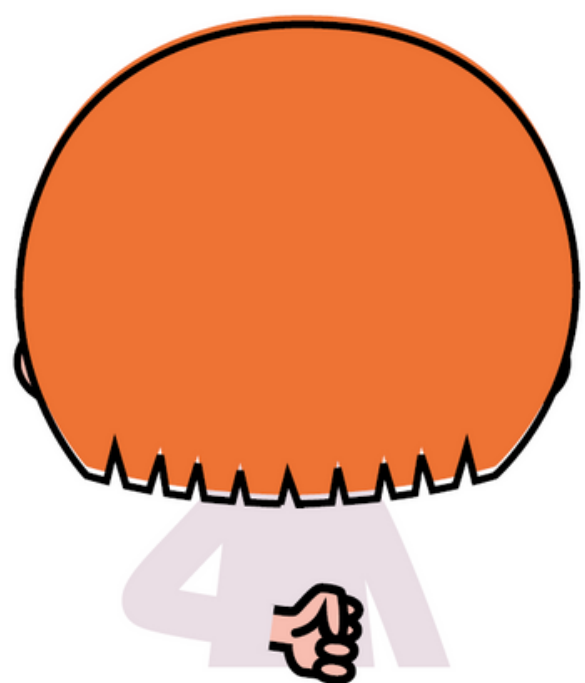
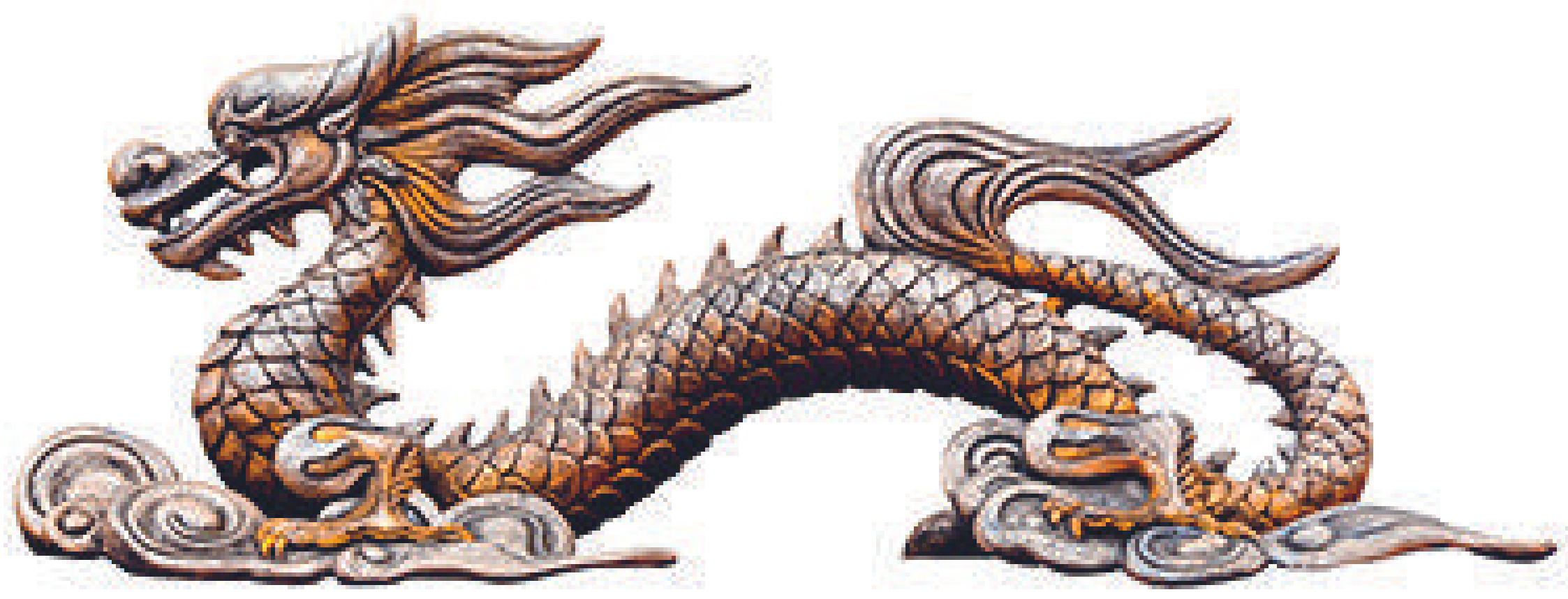


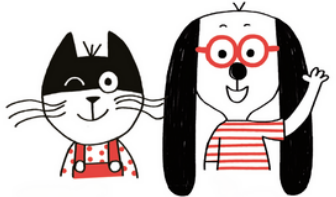


D d

D d

Blank handwriting lines for practice.



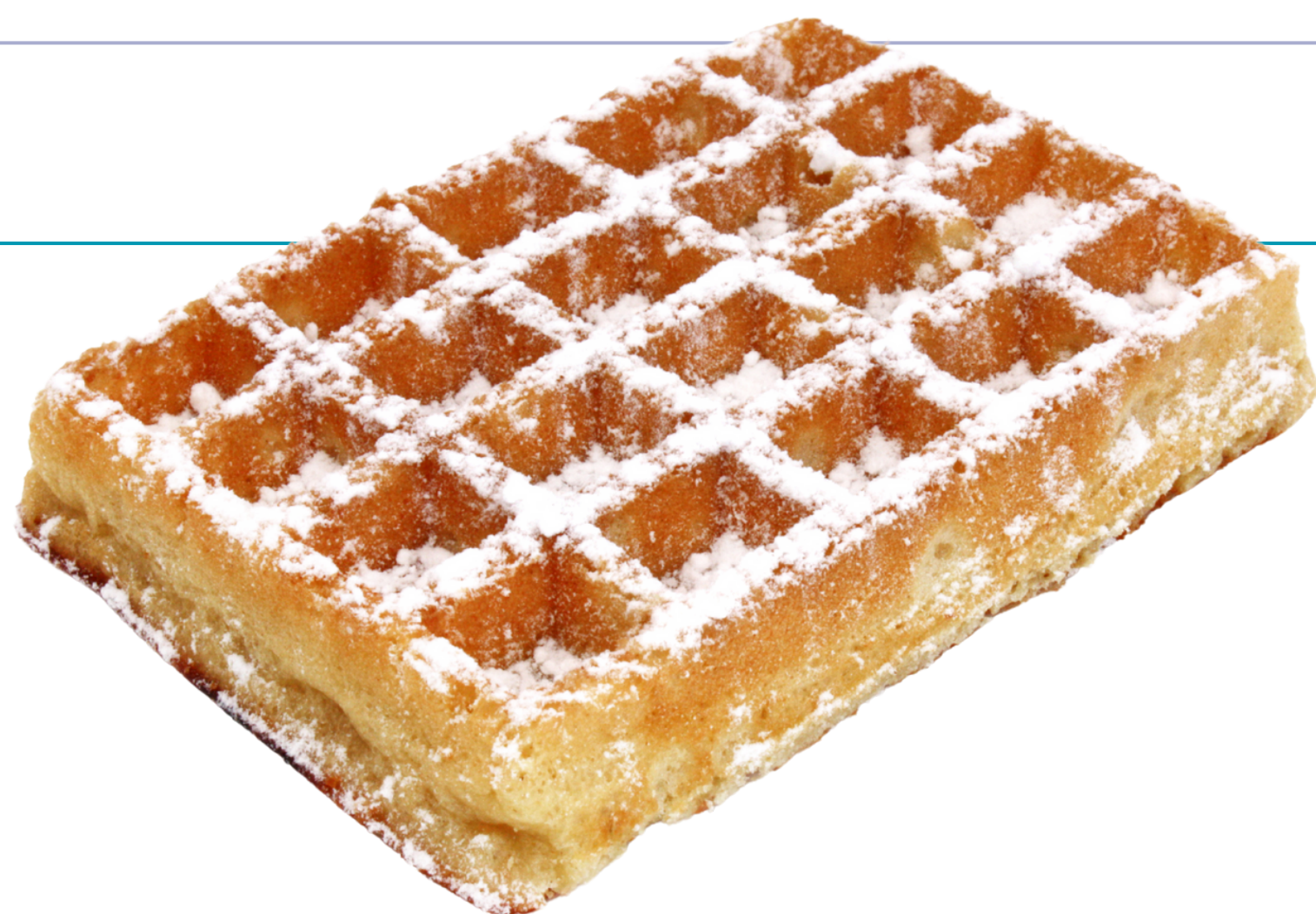


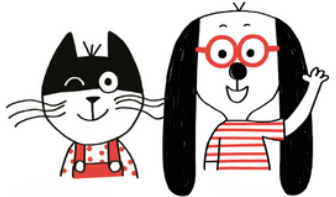
au

eau

au

eau



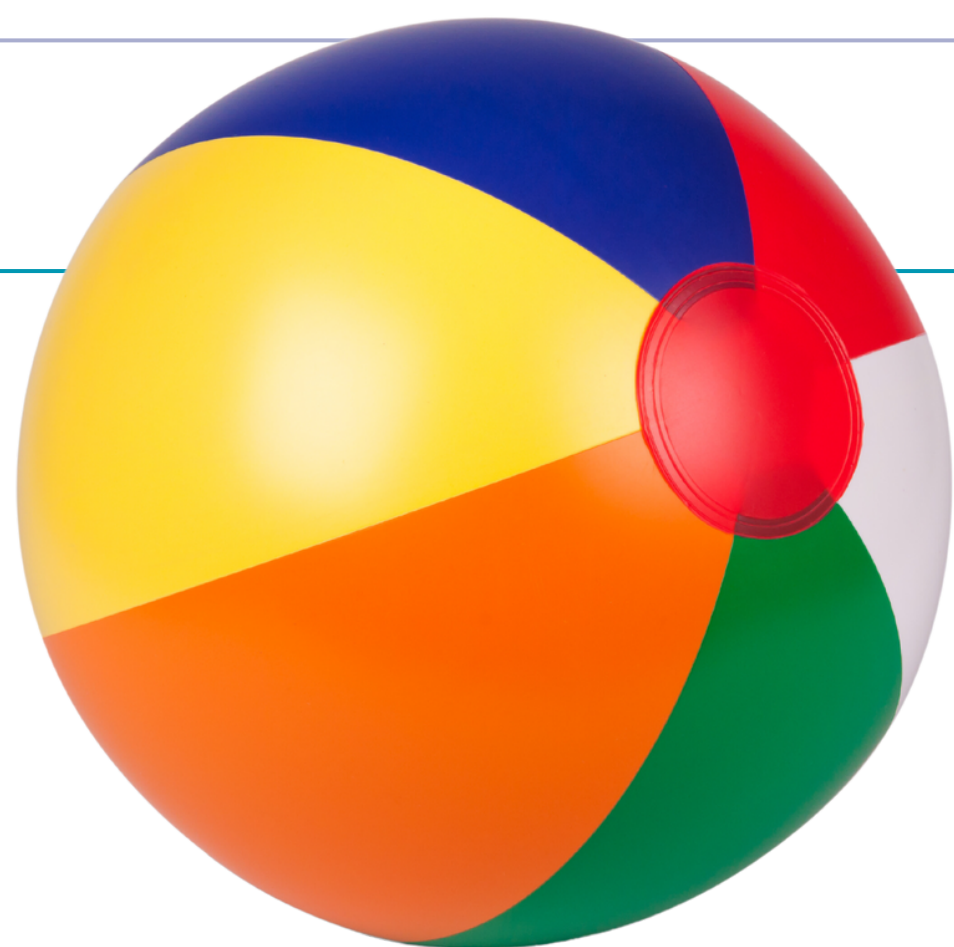


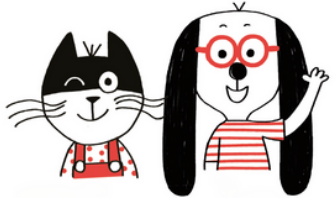
on

om

on

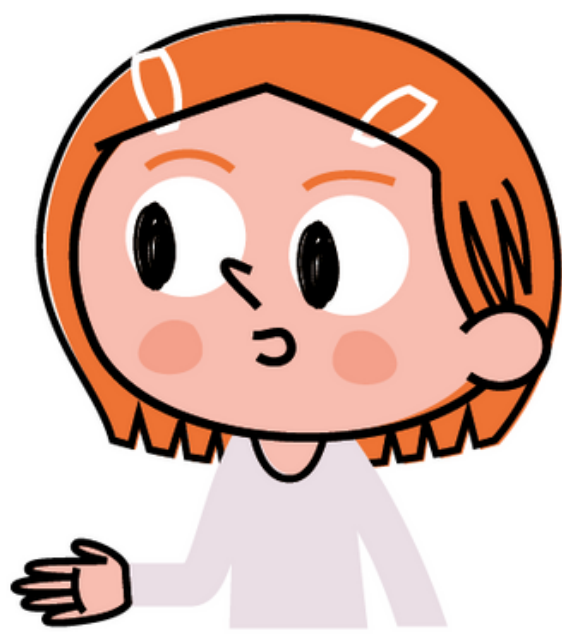
om

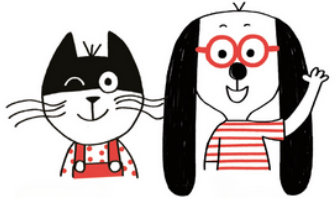




e u

e u





S

s

S

s





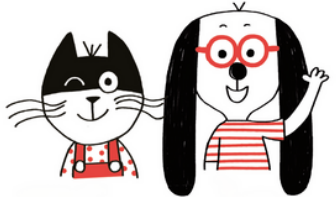
S s



S s







an

am

en

em

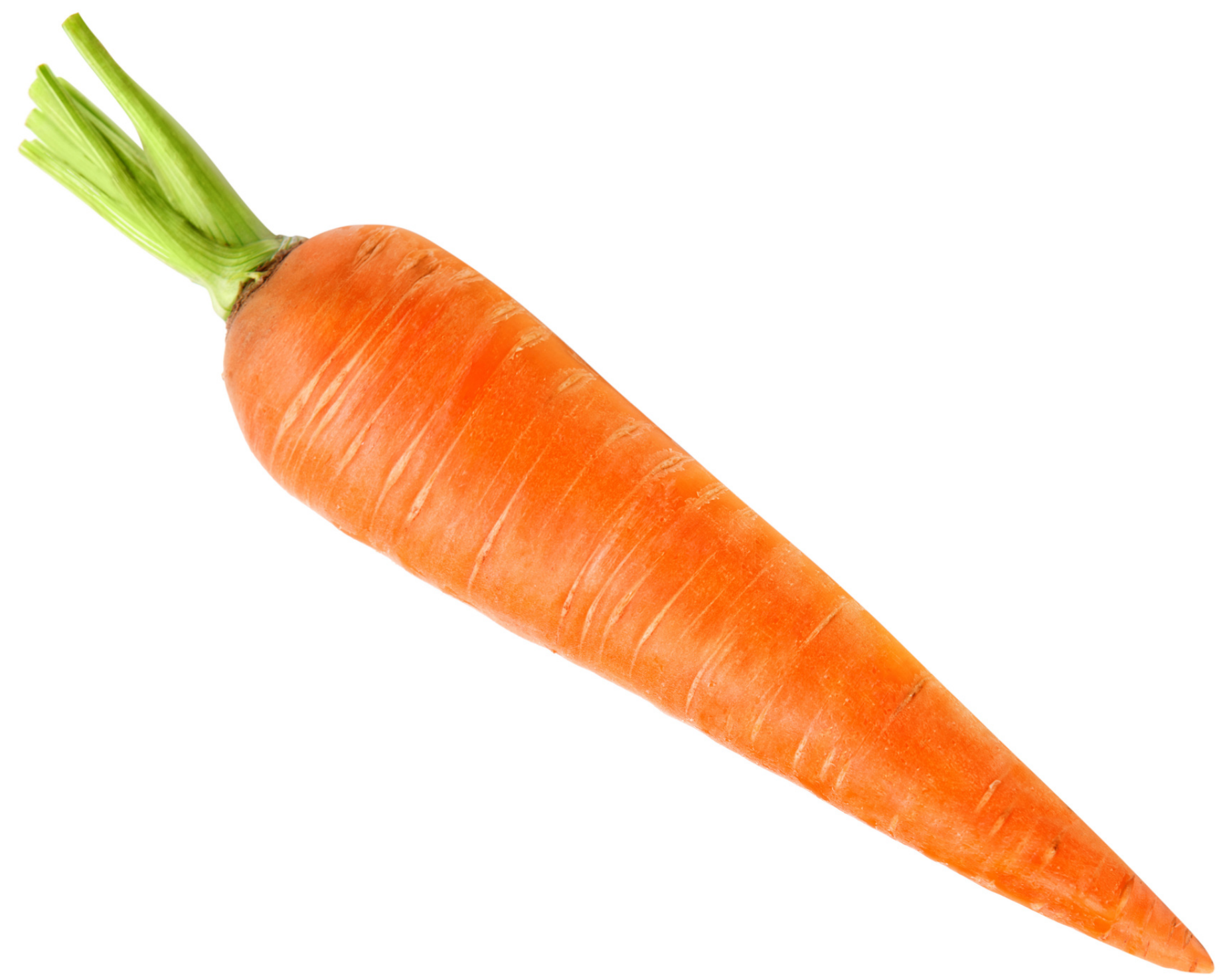
an am

en em



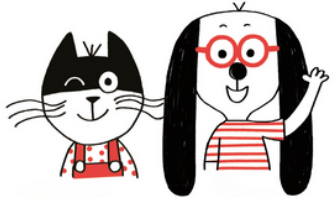


C c



C c

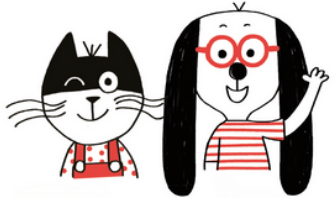




C c

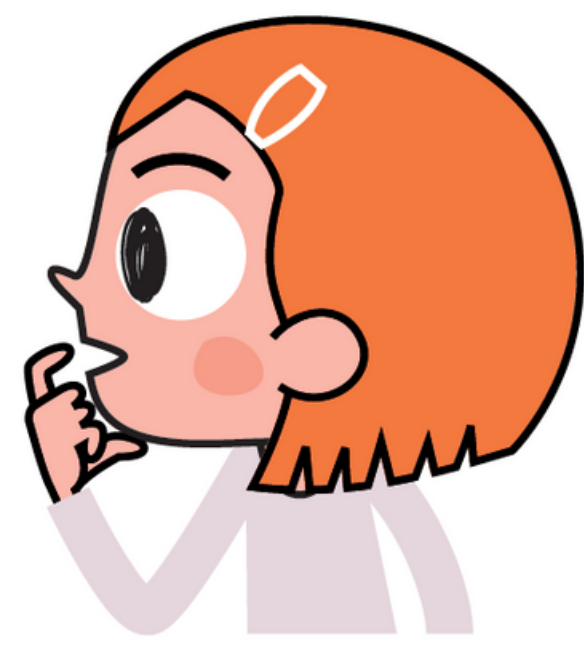
C c





G g g

G g

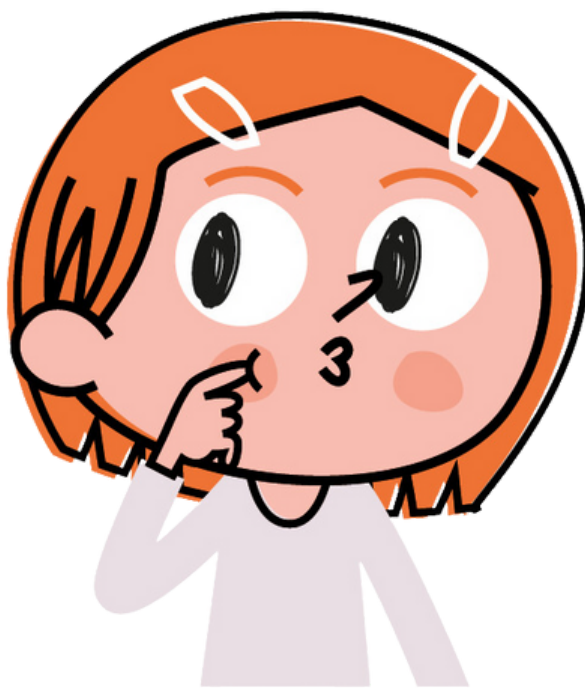


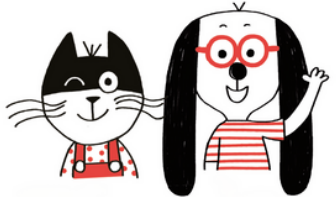


G g g



G g





in

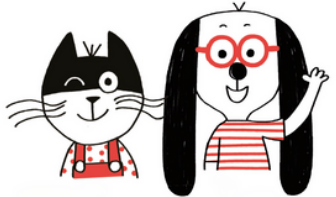
im

un

um

*in im un um*





ph

ph





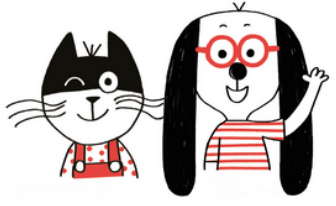
Z z



Z z





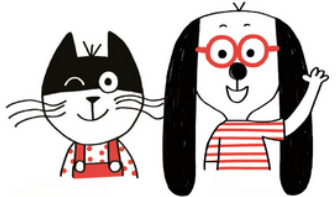


Oi



Oi

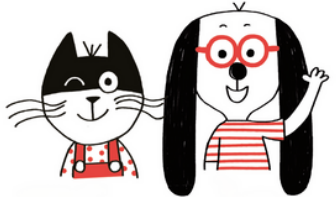




gn

gn





K

k

Q

q

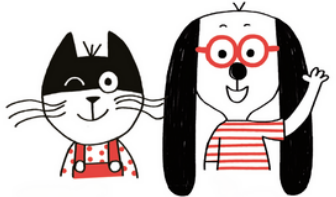
ch

K k

Q q

ch





ti



ti



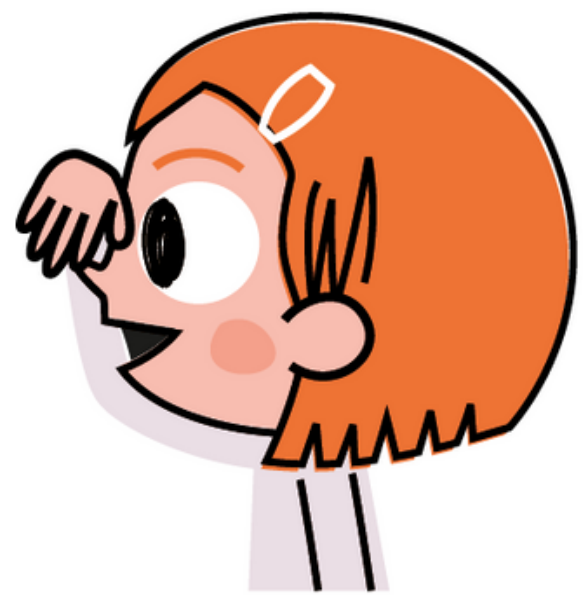


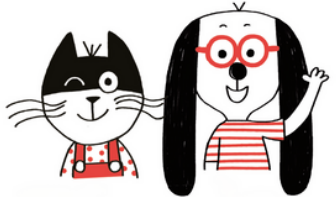
esc

el

esc

el





ai

ei

er

ez

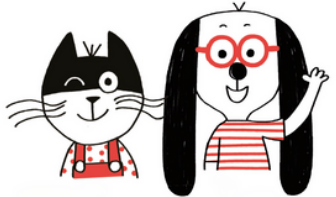
ai

ei

er

ez





ill

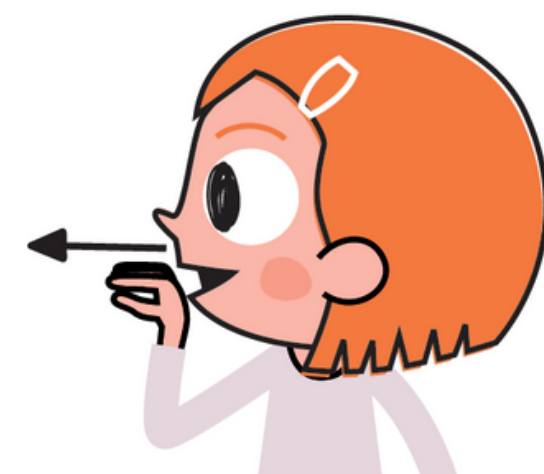
ail

eil

ouil

euil

ill ail eil ouil euil





oin

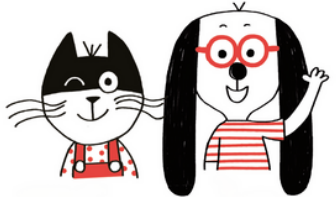
ouin

oin

ouin







ain

ein

yn

ym

ain

ein

yn

ym



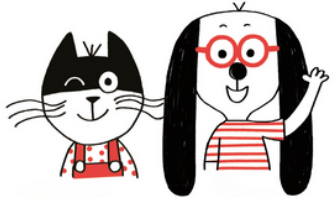


ui



Handwriting practice area with four sets of horizontal lines. The second set from the top contains the cursive letters 'ui' written in black ink. The bottom-most line is a solid red line, while the others are blue.

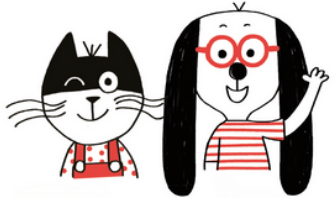




Y y

Y y



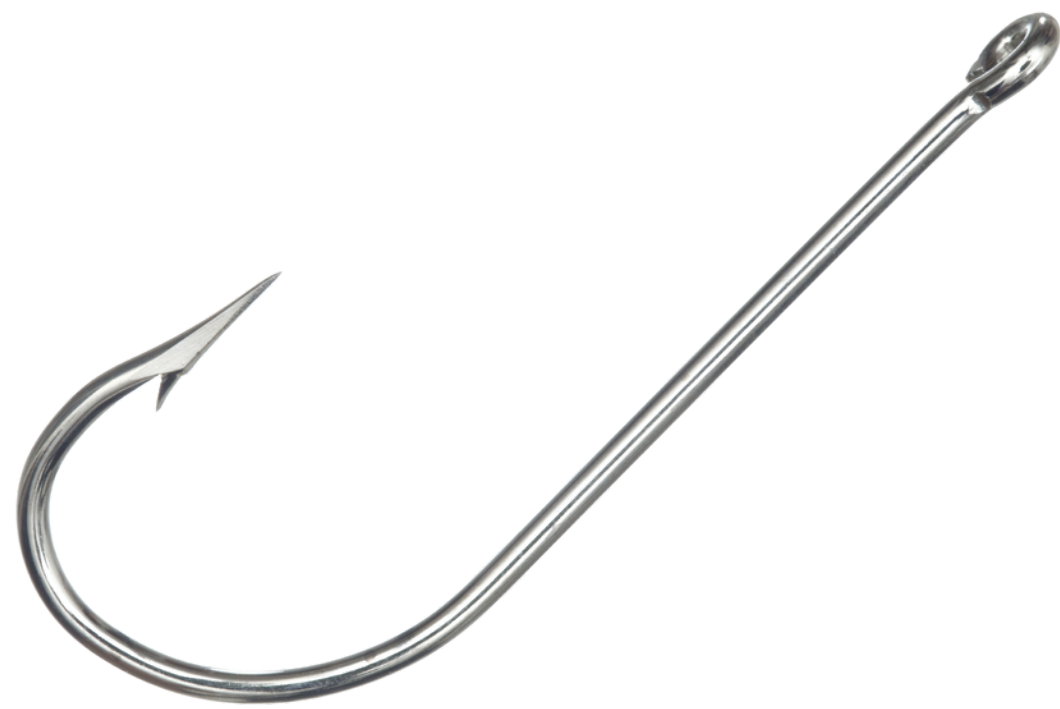


3

sc

3

sc



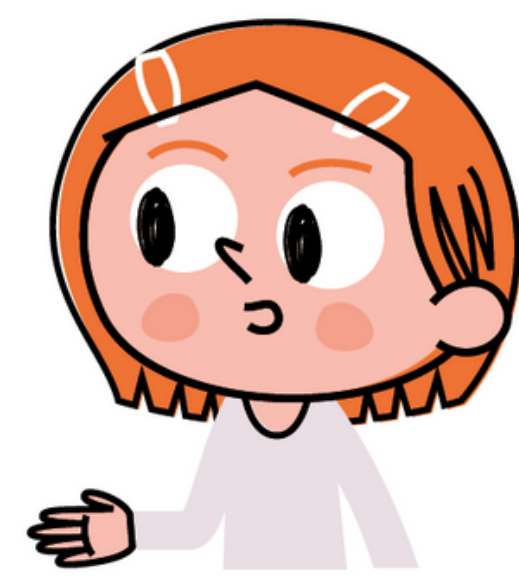


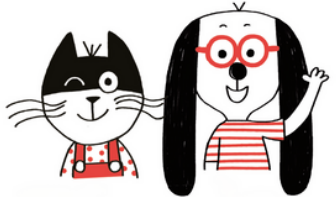
æi

æu

æi

æu

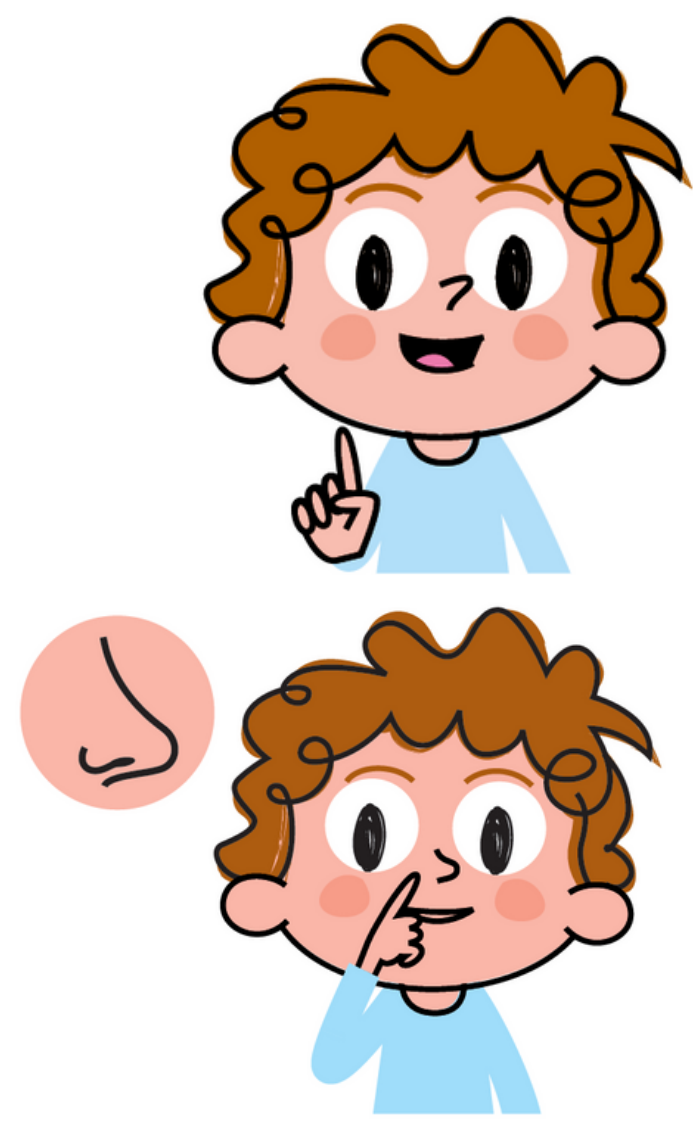


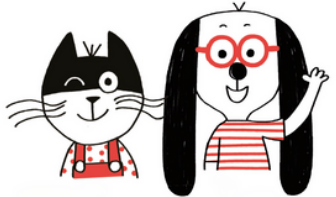


i  
ien



i  
iem

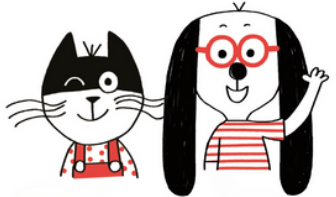




X x

x x





W w

W w

