



A a a

A a



B

b

B b



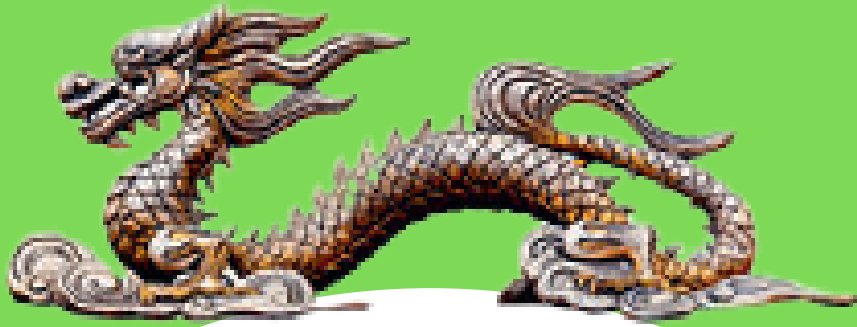
C

c

C

c

Handwriting practice lines consisting of a blue top line, two purple middle lines, a red bottom line, and a blue bottom line.



D

d

D

d



E

e

E

e



F

f

F f



G

gg

G

g



H h

H h





I

i

J

j



J j

J j



K k

K k



L

l

L

l



M

m

M

m



N n

N n



O

o

O

o



P

p

P

p





Q

q

Q

q



R

r

R

r



S

s

S

s



T

t

T

t



U

u

U

u



V

v

V

v

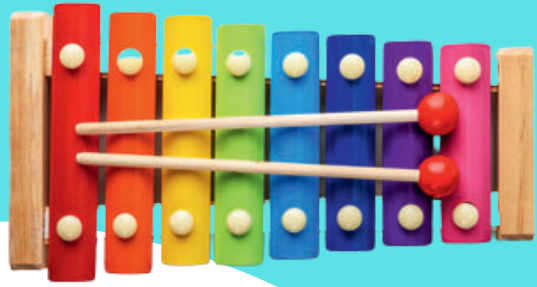


W

w

W

w



X

x

X

x





Y

y

Y y

Y y



Z

z

Z z